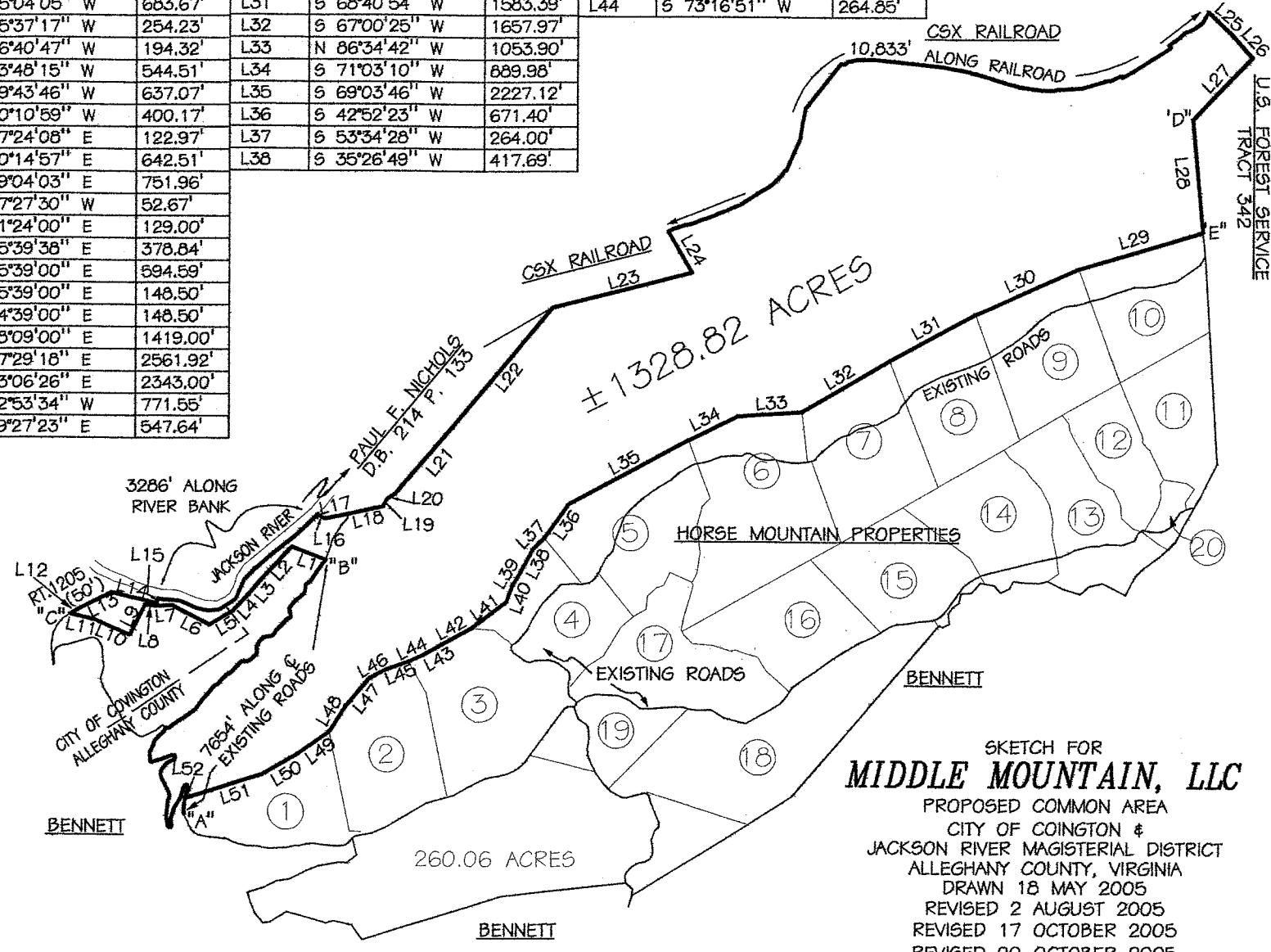
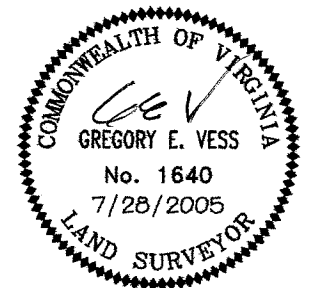
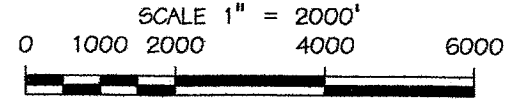


LINE	BEARING	DISTANCE	LINE	BEARING	DISTANCE	LINE	BEARING	DISTANCE	LINE	BEARING	DISTANCE	LINE	BEARING	DISTANCE
L1	N 62°07'37" W	589.10'	L26	S 34°53'59" E	483.64'	L39	S 39°20'18" W	240.55'	L45	S 77°38'36" W	368.71'	L50	S 66°54'25" W	644.12'
L2	S 49°52'23" W	739.77'	L27	S 51°12'47" W	1399.12'	L40	S 27°23'11" W	295.66'	L46	S 69°06'07" W	341.62'	L51	S 79°54'52" W	1292.22'
L3	S 47°06'30" W	292.65'	L28	S 01°53'14" W	1835.02'	L41	S 60°27'50" W	722.58'	L47	S 48°03'28" W	585.29'	L52	S 79°54'52" W	23.00'
L4	S 50°46'32" W	386.60'	L29	S 80°49'22" W	2098.96'	L42	S 68°33'53" W	544.86'	L48	S 39°40'58" W	486.66'			
L5	S 66°55'54" W	437.74'	L30	S 73°36'04" W	1840.45'	L43	S 67°52'38" W	351.22'	L49	S 62°12'06" W	637.34'			
L6	N 55°04'05" W	683.67'	L31	S 68°40'54" W	1583.39'	L44	S 73°16'51" W	264.85'						
L7	N 85°37'17" W	254.23'	L32	S 67°00'25" W	1657.97'									
L8	N 76°40'47" W	194.32'	L33	N 86°34'42" W	1053.90'									
L9	S 33°48'15" W	544.51'	L34	S 71°03'10" W	889.98'									
L10	N 59°43'46" W	637.07'	L35	S 69°03'46" W	2227.12'									
L11	N 70°10'59" W	400.17'	L36	S 42°52'23" W	671.40'									
L12	N 67°24'08" E	122.97'	L37	S 53°34'28" W	264.00'									
L13	N 70°14'57" E	642.51'	L38	S 35°26'49" W	417.69'									
L14	S 69°04'03" E	751.96'												
L15	S 27°27'30" W	52.67'												
L16	S 51°24'00" E	129.00'												
L17	N 85°39'36" E	378.84'												
L18	N 85°39'00" E	594.59'												
L19	N 35°39'00" E	148.50'												
L20	N 64°39'00" E	148.50'												
L21	N 48°09'00" E	1419.00'												
L22	N 47°29'18" E	2561.92'												
L23	N 83°06'26" E	2343.00'												
L24	N 22°53'34" W	771.55'												
L25	S 39°27'23" E	547.64'												

- NOTES:
- 1) THIS 1328.82 ACRE TRACT IS A PORTION OF THAT PROPERTY CONVEYED TO MIDDLE MOUNTAIN, L.L.C. IN DEED BOOK 395 PAGE 450.
 - 2) LINES FROM "A" TO "B" FOLLOW THE CENTER OF EXISTING ROADS AND ARE DRAWN FROM PREVIOUS SURVEY PLATS BY BERKLEY-HOWELL & ASSOC., P.C..
 - 3) LINES "B" TO "C" AND "E" TO "A" ARE DRAWN FROM A FIELD SURVEY BY THE UNDERSIGNED SURVEYOR.
 - 4) LINES "C" TO "D" ARE DRAWN FROM PREVIOUS SURVEY PLATS BY BERKLEY-HOWELL & ASSOC., P.C..
 - 5) THIS PLAT WAS DRAWN WITHOUT A TITLE REPORT AND MAY NOT INDICATE ALL ENCUMBRANCES UPON THE PROPERTY.
 - 6) ALL CORNERS ON LINES L2 THROUGH L11 AND L29 THROUGH L52 ARE ROD SETS..



SKETCH FOR
MIDDLE MOUNTAIN, LLC
 PROPOSED COMMON AREA
 CITY OF COINGTON &
 JACKSON RIVER MAGISTERIAL DISTRICT
 ALLEGHANY COUNTY, VIRGINIA
 DRAWN 18 MAY 2005
 REVISED 2 AUGUST 2005
 REVISED 17 OCTOBER 2005
 REVISED 20 OCTOBER 2005



Vess Surveying, Inc.

132 North Maple Avenue - P.O.Box 1112 Covington, VA 24426			
phone (540) 962-3900 - fax (540) 962-3870			
3814-2	2	4	STAFF
JOB NO.	SIZE	REV.	DWN.BY