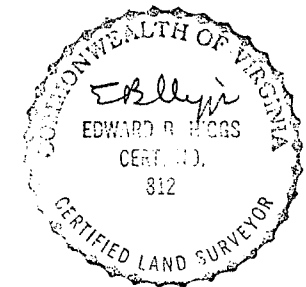


Survey of Portion
of Benners Lands
(D.B. 121 - P. 708) on
March 27, 1990 By
E.B. Higgs, Engineers-
Surveyors.

PLAT SHOWING LANDS
IN
WILLIAMSVILLE DISTRICT
BATH COUNTY, VIRGINIA

SCALE: 1" = 400' MARCH 28, 1990

E B HIGGS
ENGINEERS-SURVEYORS
STAUNTON, VIRGINIA

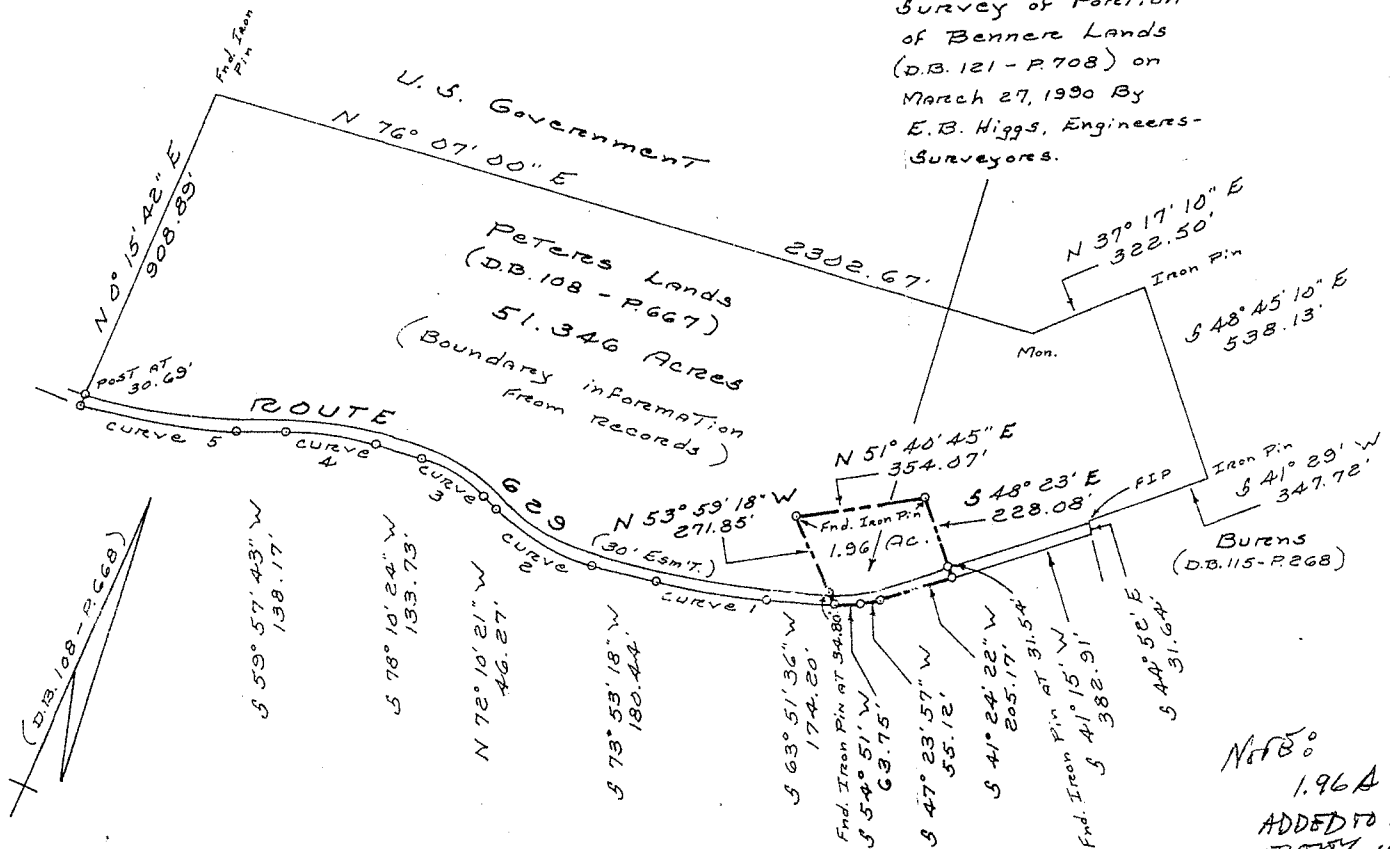


Note:
1.96A LOT WILL BE
ADDED TO AND BECOME AN
ENTRY WITH 51.346A TRACT.
SEC 2-34-5 of SUBDIV. OTC.

APPROVED:
[Signature] CPRA 29 Mar 90
GOVERNING AUTHORITY DATE

FB. 226A P. 14

S 4411 TS



CURVE DATA

No.	DeLTA	Radius	Arc	Tangent	Chord Bearing	Chord
1	10° 01' 42"	1724.64'	301.86'	151.32'	S 68° 52' 27" W	381.47'
2	33° 56' 22"	505.76'	299.59'	154.33'	N 89° 08' 32" W	295.23'
3	29° 39' 15"	378.45'	155.87'	100.18'	N 86° 59' 58" W	193.70'
4	18° 12' 42"	755.95'	240.28'	121.16'	S 69° 04' 03" W	239.27'
5	23° 35' 45"	1372.46'	565.21'	286.67'	S 71° 45' 35" W	561.23'